

IMAGINE SPECTACULAR FAÇADES



TRESPA® METEON®

HOW YOUR BUILDING TODAY WILL STAND OUT TOMORROW

GOOD DESIGN STARTS WITH INSPIRATION, EXCEPTIONAL VISION AND PROVOCATIVE THINKING. IT COMES TO LIFE WITH GREAT MATERIALS, FINISHES AND SYSTEMS. TRESPA® METEON® STANDS OUT IN VERTICAL EXTERIOR WALL COVERINGS SUCH AS FAÇADE CLADDING, BALCONY PANNELLING, SUNBLINDS AS WELL AS HORIZONTAL EXTERIOR CEILING APPLICATIONS. WITH TRESPA® METEON® YOUR BUILDING TODAY WILL STAND OUT TOMORROW.

WEATHER RESISTANCE & COLOUR STABILITY

TRESPA® METEON® PERFORMS EXCEPTIONALLY WELL OUTDOORS AND IT STAYS LOOKING GREAT FOR MANY YEARS. SUN AND RAIN WILL HAVE NO SIGNIFICANT EFFECT ON THE PANEL'S SURFACE.

SOLID & STURDY

TRESPA® METEON® IS HIGHLY SCRATCH AND IMPACT RESISTANT. THE PANELS ARE CONSISTENT, HIGH-DENSITY THROUGHOUT, EASILY MACHINABLE AND WORKABLE LIKE HARDWOOD.

LOW MAINTENANCE & EASY TO CLEAN

THE CLOSED SURFACE OF TRESPA® METEON® PRACTICALLY WITHSTANDS DIRT ACCUMULATION, KEEPING THE PRODUCT SMOOTH AND EASY TO CLEAN.

LONGEVITY

CLEANABILITY

SUSTAINABILITY



TRESPA® METEON®
CONTAINS UP TO
**70%
WOOD-BASED
FIBRES**

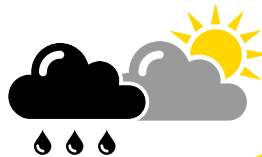


WIDE RANGE OF COLOURS

TRESPA® METEON® IS AVAILABLE IN MANY STANDARD COLOURS, FINISHES, SIZES AND THICKNESSES AND EVEN CUSTOM-MADE PROJECT COLOURS. STANDARD AND ENHANCED FIRE-RETARDANT GRADE ARE AVAILABLE.



DESIGN FREEDOM



HIGH QUALITY

MATERIAL TECHNOLOGY & KNOW-HOW

A COMBINATION OF HIGH QUALITY MATERIALS, ADVANCED PROCESS TECHNOLOGIES (I.E. EBC), MORE THAN 50 YEARS EXPERIENCE AND KNOW-HOW, MAKES TRESPA® METEON® AN EXTREMELY VERSATILE PRODUCT.

ORGANISATION RELIABILITY



98%
RELIABILITY
OF SUPPLY
WITHIN THE
CONFIRMED
LEAD TIME



STRONG
FOCUS ON
SERVICE



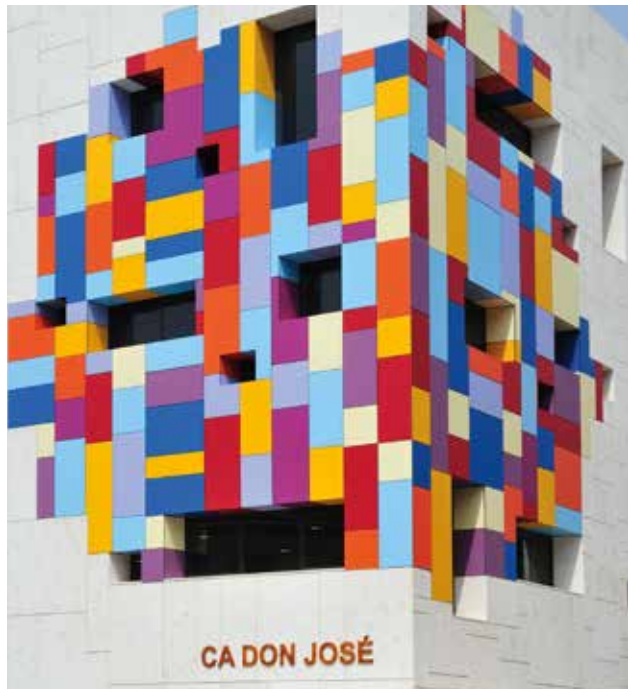
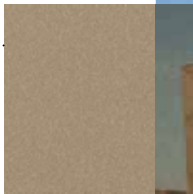
10
YEAR
PRODUCT
GUARANTEE

COLOURING THE WORLD



A32.7.2
DARK GREEN

M06.4.1
AMBER



PROJECT
COLOUR

THE NATURAL TOUCH



NW08
ITALIAN WALNUT



NW03
HARMONY OAK

UNI COLOURS

<div>A28.2.1</div> <div>Aquamarine</div>	<div>A22.3.1</div> <div>Ocean Grey</div>	<div>A24.0.3</div> <div>Polar Blue</div>	<div>A23.0.4</div> <div>Mineral Blue</div>	<div>A22.2.4</div> <div>Powder Blue</div>	<div>A22.2.1</div> <div>Bluish Grey</div>	<div>A21.1.0</div> <div>Winter Grey</div>	<div>A05.0.0</div> <div>Pure White</div>
<div>A32.2.1</div> <div>Translucent Green</div>	<div>A24.4.1</div> <div>Steel Blue</div>	<div>A22.1.6</div> <div>Royal Blue</div>	<div>A22.4.4</div> <div>Brilliant Blue</div>	<div>A21.5.4</div> <div>Cobalt Blue</div>	<div>A22.6.2</div> <div>Dark Denim</div>	<div>A20.2.3</div> <div>Light Viola</div>	<div>A03.4.0</div> <div>Silver Grey</div>
<div>A30.3.2</div> <div>Verdigris</div>	<div>A35.4.0</div> <div>Cactus Green</div>	<div>A28.6.2</div> <div>Mid Green</div>	<div>A26.5.4</div> <div>Pacific</div>	<div>A20.7.2</div> <div>Dark Blue</div>	<div>A21.7.0</div> <div>Steel Grey</div>	<div>A20.5.2</div> <div>Lavender Blue</div>	<div>A21.5.1</div> <div>Mid Grey</div>
<div>A37.2.3</div> <div>Spring Green</div>	<div>A33.3.6</div> <div>Brilliant Green</div>	<div>A32.7.2</div> <div>Dark Green</div>	<div>A34.8.1</div> <div>Forest Green</div>	<div>A90.0.0</div> <div>Black</div>	<div>A25.8.1</div> <div>Anthracite Grey</div>	<div>A05.5.0</div> <div>Quartz Grey</div>	<div>A16.5.1</div> <div>Mauve</div>
<div>A03.1.0</div> <div>Pastel Grey</div>	<div>A37.0.8</div> <div>Lime Green</div>	<div>A36.3.5</div> <div>Turf Green</div>	<div>A08.8.1</div> <div>Dark Brown</div>	<div>A14.7.2</div> <div>Deep Red Brown</div>	<div>A11.8.0</div> <div>Ceramic Greige</div>	<div>A06.7.1</div> <div>Natural Greige</div>	<div>A06.5.1</div> <div>Toscana Greige</div>
<div>A05.1.1</div> <div>Stone Beige</div>	<div>A41.0.6</div> <div>Mojito Green</div>	<div>A08.4.5</div> <div>Rusty Red</div>	<div>A09.6.4</div> <div>Mahogany Red</div>	<div>A12.6.3</div> <div>Wine Red</div>	<div>A12.3.7</div> <div>Carmine Red</div>	<div>A10.4.5</div> <div>Sienna Brown</div>	<div>A10.6.1</div> <div>Taupe</div>
<div>A04.0.0</div> <div>Cream White</div>	<div>A04.0.5</div> <div>Zinc Yellow</div>	<div>A06.3.5</div> <div>Ochre</div>	<div>A10.1.8</div> <div>Red Orange</div>	<div>A12.1.8</div> <div>Passion Red</div>	<div>A17.3.5</div> <div>Cyclam</div>	<div>A11.4.4</div> <div>English Red</div>	<div>A08.3.1</div> <div>Stone Grey</div>
<div>A05.1.0</div> <div>Papyrus White</div>	<div>A07.1.1</div> <div>Sand</div>	<div>A05.1.2</div> <div>Champagne</div>	<div>A04.1.7</div> <div>Gold Yellow</div>	<div>A05.1.4</div> <div>Sun Yellow</div>	<div>A08.2.3</div> <div>Salmon</div>	<div>A10.3.4</div> <div>Terra Cotta</div>	<div>A08.2.1</div> <div>Mid Beige</div>
<div>A03.0.0</div> <div>White</div>	<div>A04.0.1</div> <div>Pearl Yellow</div>	<div>A04.0.2</div> <div>Pale Yellow</div>					

METALLICS

M35.7.1 Malachite Green	M21.8.1 Graphite Grey	M51.0.2 Urban Grey	M51.0.1 Aluminium Grey
M40.4.3 Mustard Yellow	M06.4.1 Amber	M05.5.1 Titanium Bronze	M04.4.1 Titanium Silver
M20.4.2 Northern Light	M12.4.2 Garnet Red	M53.0.1 Copper Red	M53.0.2 Copper Yellow
M24.3.3 Lagoon	M21.3.4 Azurite Blue	To experience the metallic effect we advise to order a sample.	

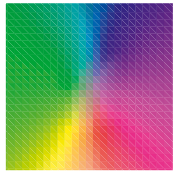
NATURALS

NA11 French Limestone	NA12 Natural Chalkstone	NA13 Silver Quartzite
NA14 Weathered Basalt	NA15 Indian Terra Cotta	
NEW	NEW	NEW
NM06 Tempered Grey	NM05 Hardened Brown	NM01 Rusted Brown
NEW	NEW	NEW
NM07 Casted Grey	NM04 Sintered Alloy	NM02 Forged Alloy
NEW		
NM03 Corroded Green	To experience the metallic effect in the NM products, we advise to order a sample.	

WOOD DECORS

NEW	NEW	NEW			
NW26 Core Ash	NW28 Halmstad	NW24 Greyed Cedar	NW17 Milano Grigio	NW05 Loft Brown	NW22 Slate Wood
NEW	NEW	NEW			
NW27 Denver Oak	NW29 Woodstone	NW25 Hesbania	NW14 French Walnut	NW13 Country Wood	NW23 Nordic Black
NW20 Bleached Pine	NW21 Australian Pine	NW02 Elegant Oak	NW18 Light Mahogany	NW19 Dark Mahogany	NW09 Wenge
NW12 Natural Bagenda	NW15 Milano Sabbia	NW03 Harmony Oak	NW08 Italian Walnut	NW11 Santos Palisander	
NW06 Montreux Amber	NW07 Montreux Sunglow	NW16 Milano Terra	NW10 English Cherry	NW04 Pacific Board	

PROJECT COLOURS



COLOUR YOUR IMAGINATION

Trespa® Meteon® architectural panels are available in a wide choice of standard colours and effects. To create façades that are even more individual and expressive, Trespa® Meteon® panels can be custom-made in special project colours. For more information please contact your local Trespa representative.

UNI COLOURS

Colour code	Colour name	Satin				Rock		Gloss
A03.0.0	White	■	■	■	■	■	■	■
A03.1.0	Pastel Grey	■	■	■	■	■	■	
A03.4.0	Silver Grey	■	■	■	■	■	■	
A04.0.0	Cream White	■	■	■	■	■	■	
A04.0.1	Pearl Yellow	■	■	■	■	■	■	
A04.0.2	Pale Yellow	■	■	■	■	■	■	
A04.0.5	Zinc Yellow	■	■	■	■	■	■	
A04.1.7	Gold Yellow	■	■	■	■	■	■	
A05.0.0	Pure White	■	■	■	■	■	■	■
A05.1.0	Papyrus White	■	■	■	■	■	■	
A05.1.1	Stone Beige	■	■	■	■	■	■	
A05.1.2	Champagne	■	■	■	■	■	■	
A05.1.4	Sun Yellow	■	■	■	■	■	■	
A05.5.0	Quartz Grey	■	■	■	■	■	■	
A06.3.5	Ochre	■	■	■	■	■	■	
A06.5.1	Toscana Greige	■	■	■	■	■	■	
A06.7.1	Natural Greige	■	■	■	■	■	■	
A07.1.1	Sand	■	■	■	■	■	■	
A08.2.1	Mid Beige	■	■	■	■	■	■	
A08.2.3	Salmon	■	■	■	■	■	■	
A08.3.1	Stone Grey	■	■	■	■	■	■	
A08.4.5	Rusty Red	■	■	■	■	■	■	
A08.8.1	Dark Brown	■	■	■	■	■	■	
A09.6.4	Mahogany Red	■	■	■	■	■	■	
A10.1.8	Red Orange	■	■	■	■	■	■	
A10.3.4	Terra Cotta	■	■	■	■	■	■	
A10.4.5	Sienna Brown	■	■	■	■	■	■	
A10.6.1	Taupe	■	■	■	■	■	■	
A11.4.4	English Red	■	■	■	■	■	■	
A11.8.0	Ceramic Greige	■	■	■	■	■	■	
A12.1.8	Passion Red	■	■	■	■	■	■	
A12.3.7	Carmine Red	■	■	■	■	■	■	
A12.6.3	Wine Red	■	■	■	■	■	■	■
A14.7.2	Deep Red Brown	■	■	■	■	■	■	
A16.5.1	Mauve	■	■	■	■	■	■	
A17.3.5	Cyclam	■	■	■	■	■	■	
A20.2.3	Light Viola	■	■	■	■	■	■	
A20.5.2	Lavender Blue	■	■	■	■	■	■	
A20.7.2	Dark Blue	■	■	■	■	■	■	
A21.1.0	Winter Grey	■	■	■	■	■	■	
A21.5.1	Mid Grey	■	■	■	■	■	■	■
A21.5.4	Cobalt Blue	■	■	■	■	■	■	
A21.7.0	Steel Grey	■	■	■	■	■	■	
A22.1.6	Royal Blue	■	■	■	■	■	■	
A22.2.1	Bluish Grey	■	■	■	■	■	■	
A22.2.4	Powder Blue	■	■	■	■	■	■	
A22.3.1	Ocean Grey	■	■	■	■	■	■	
A22.4.4	Brilliant Blue	■	■	■	■	■	■	
A22.6.2	Dark Denim	■	■	■	■	■	■	
A23.0.4	Mineral Blue	■	■	■	■	■	■	
A24.0.3	Polar Blue	■	■	■	■	■	■	
A24.4.1	Steel Blue	■	■	■	■	■	■	
A25.8.1	Anthracite Grey	■	■	■	■	■	■	■
A26.5.4	Pacific	■	■	■	■	■	■	
A28.2.1	Aquamarine	■	■	■	■	■	■	
A28.6.2	Mid Green	■	■	■	■	■	■	
A30.3.2	Verdigris	■	■	■	■	■	■	
A32.2.1	Translucent Green	■	■	■	■	■	■	
A32.7.2	Dark Green	■	■	■	■	■	■	
A33.3.6	Brilliant Green	■	■	■	■	■	■	
A34.8.1	Forest Green	■	■	■	■	■	■	
A35.4.0	Cactus Green	■	■	■	■	■	■	
A36.3.5	Turf Green	■	■	■	■	■	■	
A37.0.8	Lime Green	■	■	■	■	■	■	
A37.2.3	Spring Green	■	■	■	■	■	■	
A41.0.6	Mojito Green	■	■	■	■	■	■	
A90.0.0	Black	■	■	■	■	■	■	■

For available sheet sizes and thicknesses for the above finishes, please check trespa.info for the detailed and up to date Delivery Programme and Material Property Datasheet. Alternatively you can use the Product Selector on trespa.com (after choosing the country where the project is located).

METALLICS

Colour code	Colour name	Satin			Rock		Gloss
M04.4.1	Titanium Silver	■	■	■	■	■	
M05.5.1	Titanium Bronze	■	■	■	■	■	
M06.4.1	Amber	■	■	■	■	■	
M12.4.2	Garnet Red	■	■	■	■	■	
M20.4.2	Northern Light	■	■	■	■	■	
M21.3.4	Azurite Blue	■	■	■	■	■	
M21.8.1	Graphite Grey	■	■	■	■	■	■
M24.3.3	Lagoon	■	■	■	■	■	
M35.7.1	Malachite Green	■	■	■	■	■	
M40.4.3	Mustard Yellow	■	■	■	■	■	
M51.0.1	Aluminium Grey	■	■	■	■	■	■
M51.0.2	Urban Grey	■	■	■	■	■	
M53.0.1	Copper Red	■	■	■	■	■	
M53.0.2	Copper Yellow	■	■	■	■	■	

Trespa® Miteon® Metallics panels feature a directional coloured surface.

NATURALS

Colour code	Colour name	Matt	Matt-Rock
NA11	French Limestone	■	■
NA12	Natural Chalkstone	■	■
NA13	Silver Quartzite	■	■
NA14	Weathered Basalt	■	■
NA15	Indian Terra Cotta	■	■
NM01	Rusted Brown	■	
NM02	Forged Alloy	★	
NM03	Corroded Green	■	
NM04	Sintered Alloy	★	
NM05	Hardened Brown	★	
NM06	Tempered Grey	★	
NM07	Casted Grey	★	

Trespa® Miteon® Naturals panels feature a directional coloured surface.

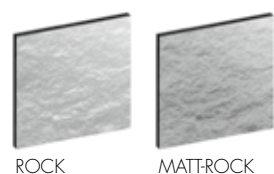
★ Decors have gloss elements in the surface; single sided only.

WOOD DECORS

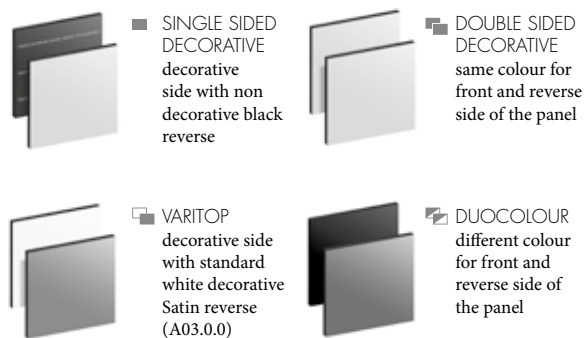
Colour code	Colour name	Satin		Matt	
NW02	Elegant Oak	■	■	■	■
NW03	Harmony Oak	■	■		
NW04	Pacific Board	■	■	■	■
NW05	Loft Brown	■	■	■	■
NW06	Montreux Amber	■	■		
NW07	Montreux Sunglow	■	■		
NW08	Italian Walnut	■	■	■	■
NW09	Wenge	■	■	■	■
NW10	English Cherry	■	■		
NW11	Santos Palisander	■	■		
NW12	Natural Bagenda	■	■		
NW13	Country Wood	■	■		
NW14	French Walnut	■	■	■	■
NW15	Milano Sabbia	■	■		
NW16	Milano Terra	■	■	■	■
NW17	Milano Grigio	■	■	■	■
NW18	Light Mahogany	■	■		
NW19	Dark Mahogany	■	■		
NW20	Bleached Pine	■	■	■	■
NW21	Australian Pine	■	■	■	■
NW22	Slate Wood	■	■	■	■
NW23	Nordic Black	■	■	■	■
NW24	Greyed Cedar			■	■
NW25	Hesbania			■	■
NW26	Core Ash			■	■
NW27	Denver Oak			■	■
NW28	Halmstad			■	■
NW29	Woodstone			■	■

Trespa® Miteon® Wood Decors panels feature a directional coloured surface. The grain of Trespa® Miteon® Wood Decors runs the length direction of the panel.

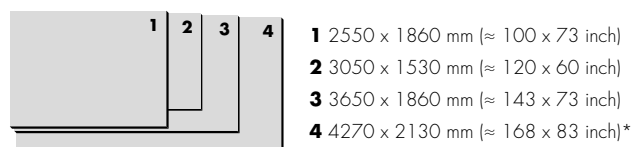
FINISHES



TYPES



SIZES

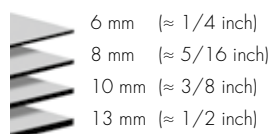


- 1 2550 x 1860 mm (≈ 100 x 73 inch)
- 2 3050 x 1530 mm (≈ 120 x 60 inch)
- 3 3650 x 1860 mm (≈ 143 x 73 inch)
- 4 4270 x 2130 mm (≈ 168 x 83 inch)*

*The large size of this panel allows an efficient machining of the product.

Note: Full size panels feature a squareness tolerance.

THICKNESSES



- 6 mm (≈ 1/4 inch)
- 8 mm (≈ 5/16 inch)
- 10 mm (≈ 3/8 inch)
- 13 mm (≈ 1/2 inch)

TRESPA INTERNATIONAL 50 YEARS OF BUILDING EXCELLENCE

TRESPA INTERNATIONAL B.V. IS A LEADING INNOVATOR IN THE FIELD OF ARCHITECTURAL MATERIALS, RECOGNISED INTERNATIONALLY AS A PREMIER DEVELOPER OF HIGH QUALITY PANELS FOR EXTERIOR CLADDING AND DECORATIVE FAÇADES. SINCE ITS FOUNDING IN 1960, TRESPA HAS WORKED CLOSELY WITH ARCHITECTS, DESIGNERS, INSTALLERS, DISTRIBUTORS AND END USERS GLOBALLY. TRESPA BELIEVES IN PRODUCT INNOVATION, COMBINING QUALITY MANUFACTURING TECHNOLOGIES WITH SMART SOLUTIONS FOR ARCHITECTURAL APPLICATIONS.

TRESPA® METEON®

Trespa® Meteon® is a decorative high-pressure compact laminate (HPL) with an integral surface manufactured using Trespa's unique in-house technology, Electron Beam Curing (EBC). The blend of up to 70% wood-based fibres and thermosetting resins, manufactured under high pressures and temperatures, yields a highly stable, dense panel with good strength-to-weight ratios. The entire Trespa® Meteon® product range is now available with PEFC™ or FSC™ certification upon request, in restricted quantities and certain jurisdictions.

VENTILATED FAÇADES

Trespa® Meteon® panels are perfect for use in innovative and functional ventilated façade systems. Used on its own or as a highlight in combination with other materials, Trespa® Meteon® determines the look and underlines the qualities of a building. Trespa is at the forefront of cutting-edge building techniques. Ventilated façades are more than a design gesture - they may provide energy efficient, long-lasting properties.

◉ INDOOR AIR QUALITY

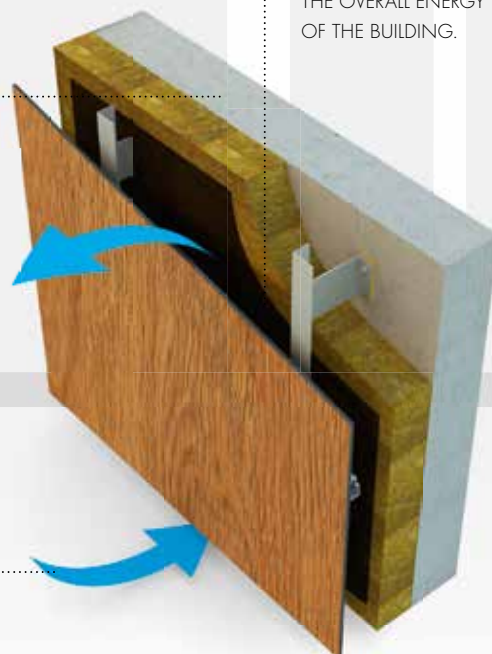
RESIDENTS AND USERS NOT ONLY FIND THEMSELVES IN A LOW-MAINTENANCE-ENVIRONMENT, BUT THE DRY AND COMFORTABLE CONDITIONS OF THE BUILDING MAY ALSO HAVE A POSITIVE CONTRIBUTION TO THE INDOOR ENVIRONMENT.

◉ CONTINUOUS AIRFLOW

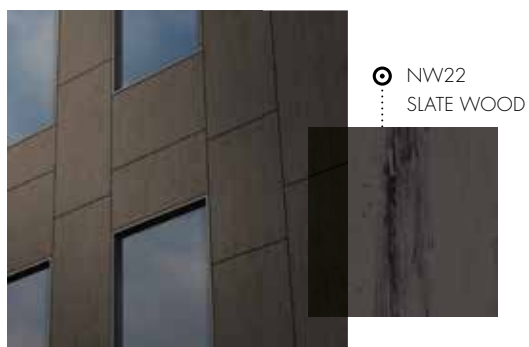
A CONTINUOUS AIRFLOW DRAWS AIR THROUGH THE CAVITY, AIDING IN THE REMOVAL OF HEAT AND MOISTURE FROM RAIN OR CONDENSATION.

◉ RAINSCREEN

THE RAINSCREEN ALSO BLOCKS PARTS OF THE SOLAR RADIATION AND ACCOMMODATES CONTINUOUS INSULATION, WHICH MAY IMPROVE THE OVERALL ENERGY PERFORMANCE OF THE BUILDING.



● VARIATIONS OF GREY



● NW22
SLATE WOOD



● NM07
CASTED GREY



● NA13
SILVER QUARTZITE

CONTACT US

TRESPA INTERNATIONAL B.V.

P.O. Box 110, 6000 AC Weert
Wetering 20, 6002 SM Weert
The Netherlands
www.trespa.com

CUSTOMER SERVICE DESK EMEA EXPORT

Tel: +31 (0) 495 458 359
Fax: +31 (0) 495 458 383
Info.Export@Trespa.com

TRESPA UK LTD.

35 Calthorpe Road
Edgbaston
Birmingham, B15 1TS
United Kingdom
Tel: 0808-2340268
Fax: 0808-2341377
Info.UK@Trespa.com

TRESPA NORTH AMERICA LTD.

62 Greene Street (Ground Floor)
New York, NY 10012
United States of America
Tel: +1 800 487 3772
Fax: +1 866 298 3499
Info.NorthAmerica@Trespa.com

TRESPA CHINA CO. LTD.

Room 2604-05, HuaiHai Plaza
No. 1045 HuaiHai Road (central)
Shanghai 200031
P.R. China
Tel: +86 (0) 21 6288 1299
Fax: +86 (0) 21 6288 1296
Info.China@Trespa.com

CUSTOMER SERVICE DESK ASIA/PACIFIC

Tel: +86 (0) 21 5465 8388
Fax: +86 (0) 21 5465 6989
Info.APAC@Trespa.com

VISIT US

TRESPA DESIGN CENTRE NEW YORK

62 Greene Street (Ground Floor)
New York, NY 10012
United States of America
Tel: +1 212 334 6888
Fax: +1 866 298 3499
TDC.NewYork@Trespa.com
www.trespa.com/tdc

TRESPA DESIGN CENTRE WEERT

Wetering 20
6002 SM Weert
The Netherlands
Tel: +31 (0) 495 458 845
TDC.Weert@Trespa.com
www.trespa.com/tdc

TRESPA DESIGN CENTRE BARCELONA

Calle Ribera 5,
08003 Barcelona
Spain
Tel: +34 (0) 93 295 4193
Fax: +34 (0) 93 116 3300
TDC.Barcelona@Trespa.com
www.trespa.com/tdc

TRESPA DESIGN CENTRE SANTIAGO

Eliodoro Yáñez 2831
Torre A - Local 1
Providencia, Santiago
Chile
Tel: +56 2 4069990
TDC.Santiago@Trespa.com
www.trespa.com/tdc

FOLLOW US



DISCLAIMER

GENERAL

These terms apply to the use of this document and such use automatically means that the other party agrees to these terms. The information provided by Trespa International B.V. ("Trespa") in this document is solely indicative. Trespa is unable to warrant the accuracy and completeness of this information. Trespa may change the information included in this document at any time and without further notice. Trespa's customers and third parties must ascertain that they have the most recent document (for the most recent version, please consult: www.trespa.com). No rights can be derived from the information provided; the use of the information is at the other party's risk and responsibility. Trespa does not warrant that the information in this document is suitable for the purpose for which it is consulted by the other party. This document does not contain any design, structural calculation, estimate or other warranty or representation that customers and third parties may rely on. This document does not guarantee any properties of Trespa products. Colours used in Trespa's communications (including but not limited to printed matter) and in samples of Trespa's products may differ from the colours of the Trespa products to be supplied. Samples are not intended for use in product tests and are not representative of characteristics of the Trespa

products. Trespa's products and samples are produced within the specified colour tolerances and the colours (of production batches) may differ, even if the same colour is used. The viewing angle also influences the colour perception. Metallic panels feature a surface whose colour appears to change based on the direction from which it is viewed. The specified colour stability and colour specifications relate only to the decorative surface of the Trespa products, not to the core material and samples of the Trespa products. Trespa products are delivered ex-works with straight, sawn sides. Customers and third parties must have a professional adviser inform them about (the suitability of) the Trespa products for all desired applications and about applicable laws and regulations. Trespa does not warrant the above. The most recent version of the current delivery programme and the Material Properties Datasheet can be found at www.trespa.info. Only the information in the most recent and valid Material Properties Datasheet should be used to select and provide advice regarding Trespa products. Trespa reserves the right to change (the specifications for) its products without prior notice.

LIABILITY

Trespa is not liable (neither contractual nor non-contractual) for any damage arising from or

related to the use of this document, except if and to the extent that such damage is the result of wilful misconduct or gross negligence on the part of Trespa and/or its management. The limitation of liability applies to all parties affiliated with Trespa, including but not limited to its officers, directors, employees, affiliated enterprises, suppliers, distributors, agents, and representatives.

GENERAL CONDITIONS

All oral and written statements, offers, quotations, sales, supplies, deliveries and/or agreements and all related activities of Trespa are governed by the Trespa General Terms and Conditions of Sale (*Algemene verkoopvoorwaarden Trespa International B.V.*) filed with the Chamber of Commerce and Industry for Noord- en Midden-Limburg in Venlo (NL) on 11 April 2007 under number 24270677, which can be found on and downloaded from the Trespa website, www.trespa.com/documentation. All oral and written statements, offers, quotations, sales, supplies, deliveries and/or agreements and all related work of Trespa North America, Ltd. are governed by the Trespa North America General Terms and Conditions of Sale, which can be found on and downloaded from the Trespa website, www.trespa.com/documentation. A copy of these general conditions of sale will be provided free of

charge on request. All general terms and conditions other than the conditions mentioned above are dismissed and do not apply, regardless of whether such terms and conditions are referred to on requests for offers, offer confirmations, stationery and/or other documents of the other party, even if Trespa does not expressly object to such terms and conditions.

INTELLECTUAL PROPERTY

All intellectual property rights and other rights regarding the content of this document (including logos, text and photographs) are owned by Trespa and/or its licensors. Any use of the content of this document, including distribution, reproduction, disclosure, storage in an automated data file or the dispatch of such a file without Trespa's prior written consent is explicitly prohibited. * Trespa, Meteon, Athlon, TopLab, TopLab^{PLUS}, TopLab^{ECO-FIBRE}, Virtuon, Izeon, Volkern, Trespa Essentials and Mystic Metallics are registered trademarks of Trespa.

QUESTIONS

Should you have any questions or comments, please do not hesitate to contact Trespa.

VERSION 4.0 ■ BROCHURE CODE U2405 ■ DATE 01-2015



VISIT TRESPA.COM FOR THE MOST
UP TO DATE VERSION OF THIS DOCUMENT.

TRESPA®